



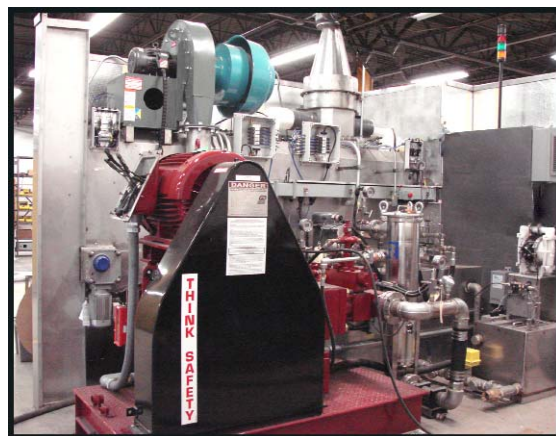
Image courtesy of 3D Systems Corporation

## Background

This customer is a medical device company that manufactures all their plastic products using stereolithography (SLA). They are one of the largest manufacturers of mass customized products in the world.

## Problem

To maintain quality, the SLA plates need to be cleaned after every batch to remove residual thermo plastic resin. The SLA plates measure .375" thick x 20.375" wide x 20.375" long and have 0.3" diameter holes. The customer was hand cleaning these units with a 3,000 PSI pressure washer. They needed an automated system that could clean one plate every two minutes.



## Solution/System

A special indexing conveyor washer with a 50 HP , 3,000 PSI pump. The entire process is automated. Plates are conveyed into the wash and dry sections, doors close, and the plates are conveyed back and forth past high pressure jets and air knives. In the high pressure wash section, 3,000 PSI jets are alternatively turned on and off to blast the hardened residue off the top and bottom surfaces.